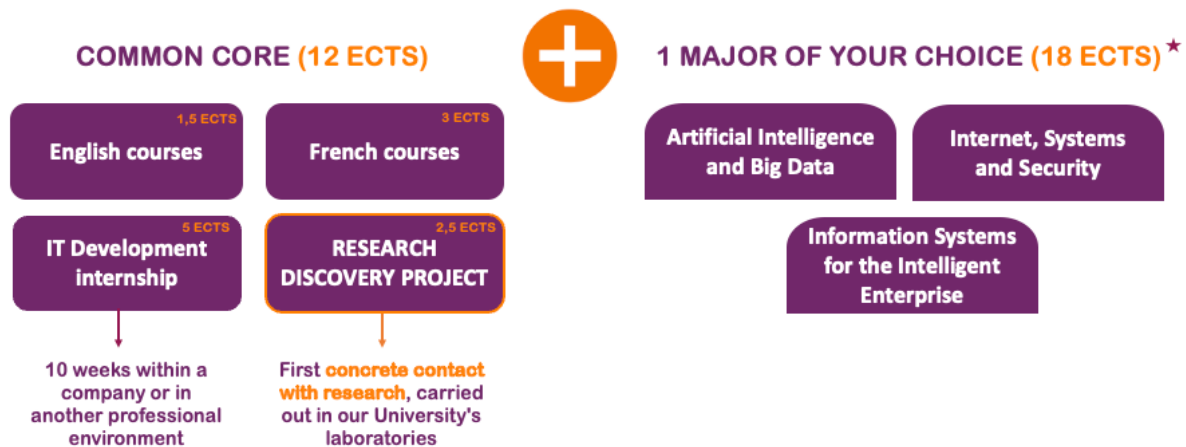


ENGLISH PROGRAM FOR INCOMING STUDENTS

Spring semester (January to July) - RESEARCH ORIENTED



* MAJORS' DETAILED LIST OF COURSES:

ARTIFICIAL INTELLIGENCE AND BIG DATA (18 ECTS)
Parallel Algorithmics
Information Coding: application to medical data
Statistics and Data Analysis
Mass Data Management
Data Visualization
Evaluation de Performance
Business Oriented Course 1
Project Business-oriented module 1
Big Data Management Project

OR

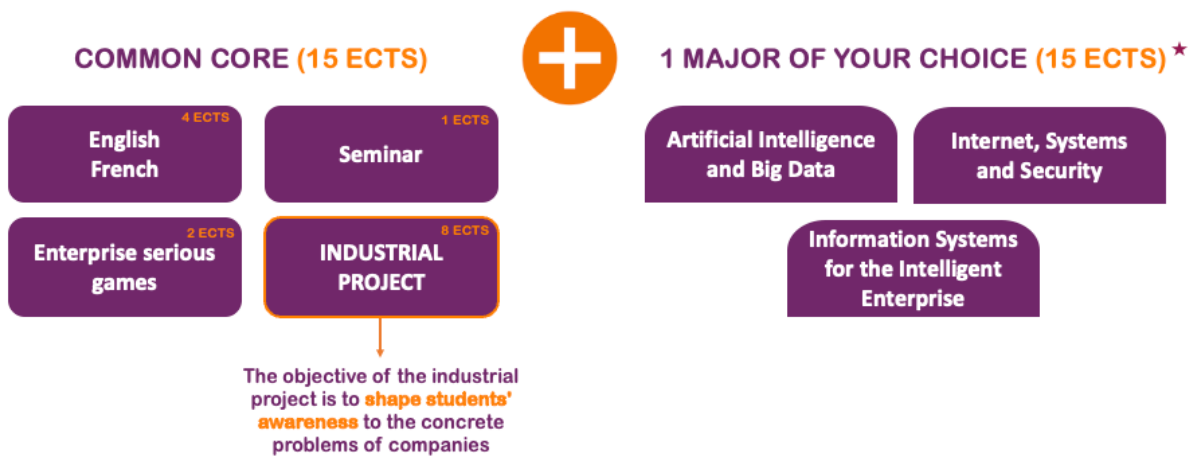
INTERNET, SYSTEMS AND SECURITY (18 ECTS)
Systems II
Advanced Networking
Project Compilation 2
Digital Forensics, Incident Response
Methods, Law and Organization of Cybersecurity
Application Security
Supervision, Control and Internet
Cryptography and Authentication
Information Theory, Data Compression and Reliability

OR

INFORMATION SYSTEMS FOR THE INTELLIGENT ENTERPRISE (18 ECTS)
Information Systems Development
Enterprise Integrated Management
Design and Performance of the Smart Enterprise
Digital Twin and Artificial Intelligence for Industry
Enterprise 4.0
ISIE project

ENGLISH PROGRAM FOR INCOMING STUDENTS

Fall semester (September to February) - INDUSTRY ORIENTED



* MAJORS' DETAILED LIST OF COURSES:

ARTIFICIAL INTELLIGENCE AND BIG DATA (15 ECTS)
NoSQL Databases
Cloud Computing: Opportunities and Risks
Business Oriented Course 2 + Big Data Seminar
Statistical Learning
Advanced Artificial Intelligence
Hackathon Big Data
Data Mining and Knowledge Extraction
Distributed Algorithms
OR
INTERNET, SYSTEMS AND SECURITY (15 ECTS)
Mobile applications and internet of things
Big data for cyber-security
Cloud computing: opportunities and risks
Security of networks and services
Malware and reverse engineering
Security and verification protocols
Security management
Ethical hacking
Advanced cryptography
OR
INFORMATION SYSTEMS FOR THE INTELLIGENT ENTERPRISE (15 ECTS)
Model-Based Systems Engineering
Distributed Systems
NoSQL Database
Artificial Intelligence and Cobotics
Business Intelligence
Enterprise Applications Interoperability